



SCHOOL MATTERS

Week Ending Friday 21st November 2025 Vol 6



LOVE LEARNING. LOVE GOD. LOVE ONE ANOTHER.

Fortnightly newsletter of Poulton-le-Fylde, St Chad's CE Primary School

Tel: 01253 883639

www.poultonstchadsce.lancs.sch.uk

Christian Value Autumn 2



Perseverance

Galatians 6:9: "And let us not grow weary of doing good, for in due season we will reap, if we do not give up."

Admissions Consultation

We still have one week of consultation left for our proposed admission arrangements- until 28.11.25. If you have any comments you would like to raise about our admissions, please send these to the clerk to the governors: donna.holland@lancashire.gov.uk bursar@poultonstchadsce.lancs.sch.uk. We do not propose any changes

Anti Racism

We now have an Anti-Racism policy, which can be found on our website- thankyou to the parent and children who supported us with this. In the academic year 2024-25 we did unfortunately have 1 racist incident in school which was dealt with and has been reported to governors. We have introduced our new policy as a result.

Headssup

We have been awarded the bronze medal from Headssup for our Year 6 Transition work- one of the very first schools to receive this. It acknowledges the extra steps our school has taken to ensure a smooth and positive transition for Year 6 pupils and that we have demonstrated a strong dedication to pupil wellbeing and readiness for secondary education, going above and beyond the expected provision. Well done to the team for their work on this!



Headssup Bronze Award Year 6 Transition

Hot chocolate dates

Monday 8th December Y6

Tuesday 9th December Y5

Wednesday 10th December Y4

Monday 15th December Y3

Tuesday 16th December Y2

Wednesday 17th December Y1

Thursday 18th December EYFS



Please remember to make your all inclusive payment on SCOPAY before 1st December. We will not be accepting cash on the day.



*From,
Mrs Bitsakaki*



Eco-Council - Supplement

Last year we established our Eco-Council and Staff Sustainability Team to support the children in building an appreciation and love of the natural world and build an understanding of ways we can help our planet during the climate crisis.

We loved taking part in the RSPB Big Bird Watch, with pupils eagerly spotting and recording the wonderful species that visit our grounds. Our enthusiasm for the natural world continued through BP's Everyday Energy Competition, where children explored clever and creative ways to save energy in their daily lives.

A huge highlight has been the planting of 90 new trees on our school grounds. These young trees mark the beginning of our rewilding project on the field, an effort that will help create richer habitats for local wildlife for years to come. It has been wonderful to see the children's excitement as they help nurture these new green spaces.

In Design Technology, our pupils have been showcasing impressive creativity and problem-solving skills. They have been busy designing sustainable homes built to withstand extreme weather events—an inspiring glimpse into the minds of future engineers, architects, and environmental thinkers.

We are also incredibly proud of the fantastic work done by our Eco-Councillors and our sustainability team. Their energy and ideas have helped build real engagement among the children, encouraging curiosity, responsibility, and a love for the environment.

We're looking forward to lots more exciting events, projects, and green initiatives as we enter into the new academic year!



From,
Eco Committee &
Mr Graham
Our Sustainability Lead

CALENDAR DATES

- Nov 24th EYFS & Y6 - weight & height (NHS)
- Dec 8th Carol Service - 13:30 to 14:30
- Dec 11th Panto
- Dec 12th Elf Run
Christmas Dinner &
Christmas jumper Day
- Dec 16th EYFS & KS1 Nativity 13:30 to 14:30
- Dec 17th EYFS & KS1 Christmas Party
- Dec 18th KS2 Christmas Party
- Dec 19th School closes for Christmas
- Jan 5th Back to school

Designated Safeguarding Lead:
Mrs Bitsakaki

Deputy Safeguarding Leads:
Mr Blackburn
Mrs Hardy
Mrs Harwood

Governor Safeguarding Lead:
Rev Martin Keighley

Christian Value for Autumn 2
Perseverance

ATTENDANCE

National Expectation for Attendance

94%

School Attendance Target

96%

Whole School Attendance is currently

93.91%

CLASS ATTENDANCE CURRENTLY

EYFS	94.90%
Year 1	95.15%
Year 2	93.20%

Year 3	91.80%
Year 4	93.02%
Year 5	93.60%
Year 6	96.18%

STARS AND LEARNERS OF THE WEEK

WEEK ENDING 7TH NOVEMBER

STARS OF THE WEEK

EYFS
YEAR 1
CREATIVE CORNER
YEAR 2
YEAR 3
YEAR 4
YEAR 5
YEAR 6

-
Aayla
Thomas
Emiliano
Blaise
Luke
Alexander
Jack R

LEARNERS OF THE WEEK

-
Kobi
Benjamin
Lucas
Archer
Harvey
Kaiden
George

TEACHER OF THE WEEK

Mrs Crossley

SUPPORT STAFF OF THE WEEK

Mrs Cassidy

TIDY CLASSROOM

KS1
Year 1

KS2
Year 4

HOUSE POINT WINNERS

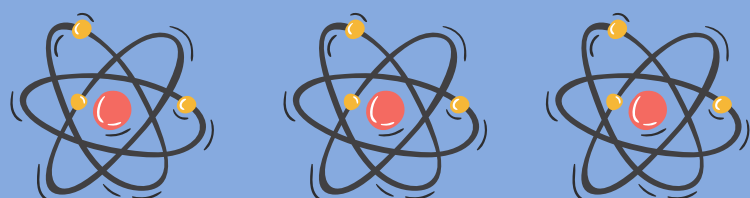
Green Snakes



STARS OF THE WEEK



LEARNERS OF THE WEEK



STARS AND LEARNERS OF THE WEEK

WEEK ENDING 14TH NOVEMBER

STARS OF THE WEEK

EYFS
YEAR 1
CREATIVE CORNER
YEAR 2
YEAR 3
YEAR 4
YEAR 5
YEAR 6

-
Amelie
Finley
Jack
Octavia
Jessica
George
Patience

LEARNERS OF THE WEEK

-
Sonny
Eadie
Ayansh
Benjamin
Lucas
Theodore
Seth

TEACHER OF THE WEEK

Mr Blackburn

SUPPORT STAFF OF THE WEEK

Mr Harrod

TIDY CLASSROOM

KS1
Year 2

KS2
Year 5

HOUSE POINT WINNERS

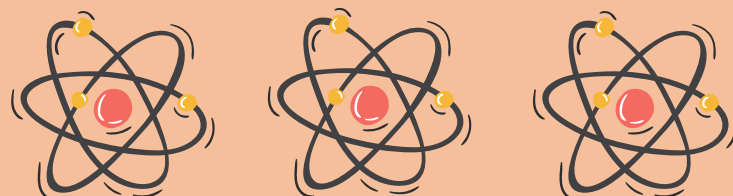
Yellow Lions



STARS OF THE WEEK



LEARNERS OF THE WEEK



Headteacher's Award w/e 7th November

Floki Award



Polly
Y1



George
Y2



Millie
Y3

Headteacher's Award w/e 14th November

Floki Award



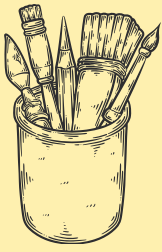
Ronnie
Y3



Nancy
Y5



George
Y5



LOOK AT OUR LEARNING

KEY STAGE 1



EYFS



This week we have been learning all about 1 more. The children have been using lots of different resources to show 1 more.

YEAR 1



On Monday, we took a walk into Poulton to investigate the different features of our local area. During our journey, we were excited to discover some hidden treasure!

CREATIVE CORNER

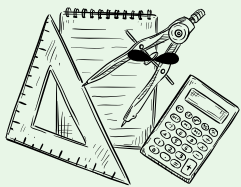


Creative have been reading Bright Stanley by Matt Buckingham. We are painting paper plates ready to decorate Bright Stanley.

YEAR 2

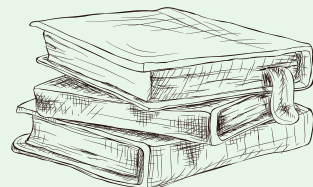


In Science, Year 2 have been exploring the effects of exercise on the body and mind.



LOOK AT OUR LEARNING

KEY STAGE 2



YEAR 3



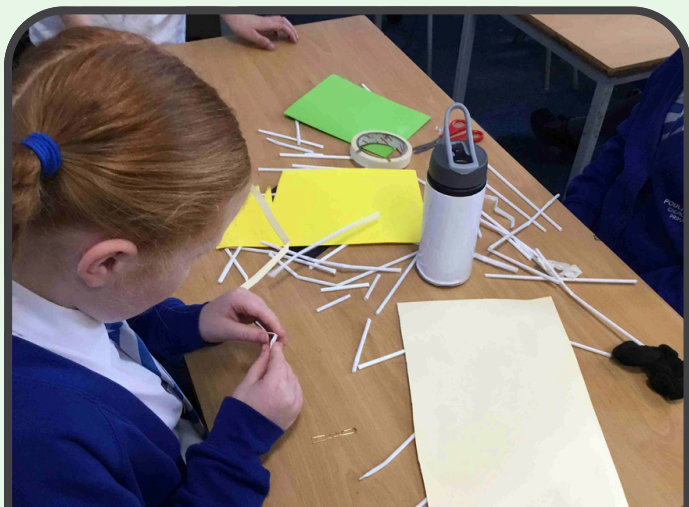
Year 3 have been learning all about Rocks and Soil in Science! Here we have one of our young scientists taking soil samples from the school garden to investigate soil composition.

YEAR 4



Year 4 have been enjoying testing their strength and stamina during our lesson on balance for our gymnastics topic in PE.

YEAR 5



Year 5 have been trying to create bridges out of different media, exploring the properties of each.

YEAR 6



Year 6 really enjoyed their visit to the 1940's Pop-up Museum in Poulton.



OOSC

OOSC children decorating biscuits



**Children
in
Need**
£143.76 Raised





Crazy Hair Day



Road Safety Awareness Week



Be Bright Be Seen



Who to Contact?

All calls are recorded for training and monitoring purposes

Website	Bursar 01253 883639	Attendance Officer	SENCO	Family Support Worker	Teachers	Senior Leadership Team
www.poultonstchadsce.lancs.sch.uk	bursar@poultonstchadsce.lancs.sch.uk	l.cameron@poultonstchadsce.lancs.sch.uk	senco@poultonstchadsce.lancs.sch.uk	fsw@poultonstchadsce.lancs.sch.uk	Name@poultonstchadsce.lancs.sch.uk	SLT
<ul style="list-style-type: none"> *Staff emails *Term dates *School policies *Car parking permit *Christian Values *Class information *Extra-Curricular activities *Friends of St Chad's *Governing Board *School uniform *Lunch Menu *General information 	<ul style="list-style-type: none"> *Urgent matters *General questions *Medication *Change of personal details/ circumstances *Scopay *Lateness 	<ul style="list-style-type: none"> *Holiday Requests *Unauthorised absences *Medical appointments *Breakfast club *After school club **Sickness absence is to be reported on the Parent App** 	<ul style="list-style-type: none"> *Concerns of additional needs *EHCP questions *Support with child's diagnosed condition **Tuesdays on site** 	<ul style="list-style-type: none"> *Early Help *Safeguarding *Family support *Mental health concerns *Bereavement *Advice about other agencies 	<ul style="list-style-type: none"> *Day to day school *Friendship issues *Low level well-being concerns *Progress & development *Homework / reading *Clubs 	<ul style="list-style-type: none"> *Any unresolved concerns following discussions with class teacher/staff. EYFS/ KS1: Mrs Harwood n.harwood@ KS2: Mr Blackburn MrBlackburn@ Headteacher: Mrs Bitsakaki head@
INSTANT ANSWER!	Urgent- same day response. Everything else- within 48 hours.	Response within 48 hours	Will respond on Tuesdays. Meetings may take 2 weeks to arrange.	Response within 48 hours	Email response or meeting arranged within 48 hours	Response within 48 hours. Meetings may take 2 weeks to arrange.

Teacher Email Addresses

Key Stage 1

EYFS

MrsArcher@poultonstchadsce.lancs.sch.uk

Year 1

n.harwood@poultonstchadsce.lancs.sch.uk
h.parry@poultonstchadsce.lancs.sch.uk

Creative Corner

c.siddall@poultonstchadsce.lancs.sch.uk

Year 2

gcrossley@poultonstchadsce.lancs.sch.uk
h.parry@poultonstchadsce.lancs.sch.uk

Key Stage 2

Year 3

MrGraham@poultonstchadsce.lancs.sch.uk

Year 4

f.sorsbie@poultonstchadsce.lancs.sch.uk

Year 5

MrBlackburn@poultonstchadsce.lancs.sch.uk

Year 6

e.hopwood@poultonstchadsce.lancs.sch.uk



Key Stage 2

Break Time Snack Bar

EVERY DAY

Fruit Pots - 30p

Raisins - 20p

Drinks - 40p

FRIDAY

Crumpets - 40p

Toasted Teacakes - 40p

Toast - 20p

Please bring correct change



Free Webinar

Autism & ADHD: Strategies To Improve Sleep



17.12.2025



10am

Register your place at witherslackgroup.co.uk/autism-adhd-sleep

**SUPPORT
A GREAT
CLAUS** at

**Santa
Dash**

Walk, jog or run
on Blackpool Promenade

**Free Santa suits and
medals for participants**

Join us...

**SUNDAY 7TH
DECEMBER
2025**



Brian House
Children's Hospice

Sponsored by



REG CHARITY NO. 511009

REGISTER ONLINE AT **www.blackpoolsantadash.co.uk**



SCHOOL ADMISSIONS PRIMARY

NORTH

Do you have a child starting
primary school in September 2026
and living in Lancashire?

Closing date: 15 January 2026

You **must** apply even if a brother or sister is already at the school,
or the school is linked to your child's nursery.

Apply for a school place now by scanning
the QR code or visit [lancashire.gov.uk/schools](https://www.lancashire.gov.uk/schools)



If travel cost is an important factor in your school preference,
please check the guidance on our website, or call **01524 581148**.

**HAVE
YOUR SAY**

*Between 1 October and 31 January schools are consulting with
you to make sure admission arrangements meet future needs.
To find out more please visit www.lancashire.gov.uk/schoolplaces
and click 'school admission policies'.*

[lancashire.gov.uk](https://www.lancashire.gov.uk)

