



# SCHOOL MATTERS

Week Ending Friday 19th December 2025 Vol 8



**LOVE LEARNING. LOVE GOD. LOVE ONE ANOTHER.**

Fortnightly newsletter of Poulton-le-Fylde, St Chad's CE Primary School

Tel: 01253 883639

[www.poultonstchadsce.lancs.sch.uk](http://www.poultonstchadsce.lancs.sch.uk)

## Christian Value

Autumn 2

## Perseverance



**Galatians 6:9:** “And let us not grow weary of doing good,  
for in due season we will reap, if we do not give up.”

We have had such a busy and fantastic Autumn term, ending with all our fun-filled festivities. The children have been superstars as always- they've worked really hard, behaved well and made us proud in school and on our visits, including the panto trip which was brilliant! Our staff have worked tirelessly this term teaching and nurturing children, helping parents and being superb colleagues who support me and each other. We have a great team of people at St Chad's, including our dedicated governors and the wonderful people who volunteer in school in various ways. We appreciate our lovely parents too for all their support, positivity and the cards, gifts and festive good wishes.

We wish our staff leavers the very best as they move on to new chapters and remind them that they are always part of the St Chad's family.

So during this time of Advent, as we wait patiently to celebrate the arrival of our Lord Jesus, we give thanks for every member of our school family who contribute to making St Chad's the special place it is. I wish you all a Christmas filled with peace and love and look forward to seeing you again the 2026. God bless.

## Poulton Library - Paul's Retirement

We just wanted to let you know that Paul Hallam from Poulton Library is retiring in January. Paul has been a regular visitor to St Chad's and has often given out reading awards in our celebration worships. We have sent Paul a happy retirement gift and thankyou from all of us at St Chad's.



MERRY  
CHRISTMAS



From,  
Mrs Bitsakaki

## Feedback from School OOSC Survey as below:



**POULTON ST CHAD'S**  
CHURCH OF ENGLAND  
PRIMARY SCHOOL

### Results from our OOSC Questionnaire (November 2025)

23 respondents on 5.12.25

1. My child attends Breakfast Club Regularly 41% Occasionally 23% Never 36%
2. My child attends After School Club Regularly 59% Occasionally 14% Never 27%
3. My child enjoys attending strongly agree/agree 78 % strongly disagree/disagree 9% Don't know 13%
4. My child is happy with the variety of food and drink choices strongly agree/agree 74% strongly disagree/disagree 9 % Don't know 17%
5. My child enjoys the activities strongly agree/agree 74% strongly disagree/disagree 4 % Don't know 22%
6. Are you aware of the full terms of the OOSC contract? Yes 70% No 4 % don't know 26%
7. Do you find the booking and payment system easy to use? Yes 74% No 9 % Don't know 17 %
8. Is it helpful for your child to complete homework at ASC? Yes 57% No 13 % Don't know 30 %
9. How do you find the process of drop off/collection?

Good

Ok

Collecting the children is a long process....it takes far too long and sometimes we have to press the bell twice!

Fine

Okay

Better now you have RING

Much better

Sometimes the wait at the door can be long but other than that it's easy enough.

Easy

Good and well secure. Not ideal When it's freezing cold to still stand outside, give the locking door by the office now it would be good to be able to wait inside at the office window and be let in by the teacher once they have established who you are and who you are collecting

Great

Fine, if there's anything to pass on or discuss though it can sometimes be busy

Much better now and appreciate the canopy at the door.

Fairly straightforward, improved from before

Sometimes slow

Absolutely fine

The paper sign in slows everything down and not convinced it necessary. The Ring doorbell is great, but those waiting have no idea if you have seen/heard the call

Fine

Much better and smoother.



#### 10. EYFS 5%

Y1 38%

Y2 9%

Y3 5%

Y4 9%

Y5 24%

Y6 9%

#### 11. Any comments

- havex3children that attend. Year 1, 4 & 6 Year 1 child loves it! However Y4 and Y6 children don't so I am looking at alternative arrangements for them on a Tuesday and Thursday. I am presuming it's the activities that they do are not age appropriate? Also non of my children do any home work in OOSC - it doesn't seem to be encouraged. Thanks **We will continue to encourage homework if the children want to do it as ASC- thank you.**
- Child doesn't like any of the food options, rarely has anything other than toast or bread. Might be better to have option to take own snacks- **We have varied our menu over the last 12 months and we would like to find something your child likes- please contact Ms Cameron if youd like to discuss this further, thank you.**
- My only concern is how monitored they are when they go to the toilets. On a couple of occasions my child has mentioned boys being unpleasant to her in the toilets- there should only be 2 children at any time in the toilets and we have a band system like we do in classrooms.**Staff will ensure this is happening- thankyou for letting us know.**
- Would be helpful to see what food they are given for both breakfast and after school- publish a menu possibly? **Yes, thank you for this suggestion-we will publish a weekly menu on the OOSC section of the website. A menu for wc15.12.25 is on there now-great idea.**
- Thank you for this service it's invaluable for us as working parents. Our child really enjoys the activities on offer as well as the better variety of food on offer now. **Thankyou!**
- Can sometimes take quite a while for payment placed via child care account to be cleared on Scopay. Apart from this very happy with after school club. **Thankyou!**
- My eldest child in year 5 attends and she doesn't enjoy the activities and says they are babyish. Year 1 child loves it. More age appropriate activities for older ones- **Ms Cameron will do another survey for the children and is happy to provide resources for older children. Unfortunately in the last survey the older children's suggestions for resources were for more technology and this isn't an option as we are sure parents will agree!**
- The few times my children have attended this term, they always want to stay longer. Great improvements! **Thankyou!**

 **Thanks For**   
**Your Feedback**  




## Feedback from Site Survey as below:



**POULTON ST CHAD'S**  
CHURCH OF ENGLAND  
PRIMARY SCHOOL

### Results from our Site Questionnaire (December 2025)

40 respondents on 12.12.25

1. The school grounds are clean and tidy Strongly agree/ Agree 98% Disagree/Strongly Disagree 2% Don't know 0%
2. The school building is clean and tidy Strongly agree/ Agree 90% Disagree/Strongly Disagree 5% Don't know 5%
3. Collection and drop off work well Strongly agree/ Agree 48% Disagree/Strongly Disagree 50% Don't know 2%
4. Children have a good amount of space to play in Strongly agree/ Agree 95 % Disagree/Strongly Disagree 0% Don't know 5%
5. My child enjoys the play equipment Strongly agree/ Agree 90 % Disagree/Strongly Disagree 2% Don't know 8%
6. The school site is safe Strongly agree/ Agree 88% Disagree/Strongly Disagree 10% Don't know 2%
7. The crossing patrol is positive Strongly agree/ Agree 100 %
8. Do you feel parent parking near school is a safety concern?  
Yes 6 (+6 comments below)  
No 11 (+1 comment below)  
Simply not enough spaces in the elk carpark to park  
Yes, when parents continually park where ever they want!  
Parking at the elk with very limited parking for us is a concern and a distance for young children.  
Parking on princess avenue is safer and closer. We are allowed to park on any street given we respect neighbours drives and park safely. We pay road tax for a reason.  
Yes, and if you are in after school or breakfast club the parking pass doesn't allow you to park in the elk car park  
Doesn't effect us as we walk in most days  
Parking is terrible. The spaces are far to small for big cars which then leaves parents who have big cars no where to park.  
What parent parking??  
Yes it can be as if you walk down the side road it's difficult to see.  
Yes. I live on Princess ave as well as my child attending the school and people park on the double yellows on the corner which makes it really unsafe to turn in and out of the road, they block pavements too. I know it's in the home school agreement not to park on the road but so many people still do.  
Sometimes at the end of Princess Ave the parking can be inconsiderate but thankfully this isn't every day  
Yes, on princess ave

The Elk car park is often full so there aren't enough spaces for all parents. Particularly on wet days when more people drive. Also, when you have an early class eg: 8am - the parking permit doesn't allow you to park in the Elk until 8.30am and the traffic warden is often around at that time. When parents park directly on the pavement on princess, or when they park very close to the corner of princess / Hardhorn it's dangerous.

Occasionally with people parking inappropriately

No. Parking in the elk is safe.

Yes, and if you are in after school or breakfast club the parking pass doesn't allow you to park in the elk car park

9. Do you feel speeding on Hardhorn Road is a safety concern?

Yes 8

No 14

Yes. I think it should be 20 mph on the stretch outside school at certain times

I don't see speeding on Hardhorn road but believe there should be a zebra crossing close to the school.

Absolutely!!!

Not necessarily speeding but definitely some drivers not paying attention to the school crossing patrol

Yes an additional road crossing assistant may help further up the road

On occasions yes ! But feel extremely safe with the lolly pop lady.

Yes in general around Poulton , cars sometimes struggle to stop on crossing patrol.

Yes cars do go quickly down there

Yes. The constant road works don't help either.

Occasionally

Sometimes

It is better than it was! The school is more noticeable - lights, road markings, safety signs.

10. I like each class having a separate entrance Yes 80% No 20%

11. Which class is your child in?

EYFS 3%

Y1 22%

Y2 11%

Y3 19%

Y4 16%

Y5 13%

Y6 16%

12. Other comments/suggestions

If all children were picked up from the school playground it will reduce congestion outside Hardhorn Road and Princess Ave. It might stop parents parking down Princess Avenue. - **80% of parents like separate pick up points but we will trial something different for Y3 and Y4 as this is the most congested area at pick up.**

Pickup for junior children is chaotic . Large number of children exiting through doors . Teachers struggling to match waiting adults to children. Not enough room for adults to wait - spilling out onto dangerous road .Could Princess Ave exit not be utilised in some way- **We will trial Y3 and Y4 having a staggered finish to see if this helps.**

Remove the 1 way system from the ks1 area. The gates are large and it's unnecessary- **we are keeping the one way system as it is necessary for safety. This was introduced due to an accident a couple of years ago to keep everyone safe.**

The year 3 and 4 exit after school is basically the same. The front school is heavily congested it's unsafe parents having to wait on the pavement road area as the front school area is so small. Year 3 would be better coming out earlier before 3.10 and year 4 3.15 to stop it being so busy. On Friday year 4 came out before year 3 it was heavy rain dark and no one could see the children exiting.

There needs to be a safer way the children come out of school. We agree. **This is a great suggestion, thank you. We will trial it from January.**

It is too crowded at pick up time at the front of the school. Can it be trialled a different way? **Yes thank you, we can trial a new way- please see above.**

Pick up at 3.15pm is so busy down the narrow path. Not enough room for parents- **please see above .**

collection of years 3&4 is very congested- please see above. Front entrance very busy. Lots of parents and siblings waiting on the path causing an obstruction. Would be better coming out into the main playground, especially at pick up- **please see above..**

School pick up for  $\frac{3}{4}$  isn't safe at times and very chaotic - **please see above.**

Additional road safety would be helpful, possibly another patrol slightly higher up the road by the elk would support in slowing down the traffic as the pavement is extremely over crowded at collection- we will speak to our Road Safety officer about this next term, thank you.

The drop off for additional writing club in the morning seems rather disorganised. Staff seem harassed. A lot of waiting around to get someone's attention. One morning the main door was wide open? Fed this back to the member of staff at the time. Feel there could be some work done to make it more organised. Heard other disgruntled parents feeling the same way .- **thank you, we will look into this and will ensure better organisation from staff leading booster clubs.**

Staggered finish times for juniors which may clear some of the congestion at the front of school . - see above. **We will start with Y3 and 4 and see how this works.**

Hardhorn Bus stop opposite Elk could be removed near the school as cars still go round buses and visibility is dangerous for children and car traffic- **thank you, we will speak to our Road Safety officer about this next term.**

Difficult to collect children from 2 locations at the same time- **please speak to the class teachers about this as they should be able to help.**

Could the permits be extended to cover sessions before school? **We have asked Wyre Borough Council previously about OOSC permits and have unfortunately been turned down. We have contacted them again since this survey and we will let you know if they can extend the permits, thank you.**

Actively monitor those parking on the pavement. Sometimes they cover the full pavement. Monitor those parking close to the junction- **we monitor parking when we can and ask parents to help us with this in reporting inconsiderate parking or parking on double yellow lines. We have a Road Safety section on our website with the links:**

<https://poultonstchadsce.lancs.sch.uk/road-safety/>

**We would like to take the opportunity to remind any EYFS families or those who are new to school not to park on Princess Ave.**

Child in year 1 and 5. Would be better to get the older should first so that we are not waiting on a cramped road waiting for year 5 to come out- **Y5 parents in a previous year have asked for Princess Ave to be the collection point which we accommodated. This seems to have worked well for families since- please speak to the class teachers if you remain concerned.**

Someone smiling on the gate would be nice- **We have friendly staff- if you smile at them, they will smile back!**

I wouldn't mind if drop off was through the same door for all of KS2. But I like the separate points for pick up- **thankyou.**

 **Thanks For**   
**Your Feedback**  




## CALENDAR DATES

- Jan 5<sup>th</sup> Back to school
- Jan 14<sup>th</sup> WWF Wear It Wild - non uniform day (dress as an animal)
- Jan 15<sup>th</sup> Closing date - EYFS 2026 Admissions
- Feb 4<sup>th</sup> Class photos
- Feb 9<sup>th</sup> Parents Evening
- Feb 12<sup>th</sup> Parents Evening
- Feb 13<sup>th</sup> Parents Evening
- Feb 13<sup>th</sup> School closes for half-term

Designated Safeguarding Lead:  
**Mrs Bitsakaki**

Deputy Safeguarding Leads:  
**Mr Blackburn**  
**Mrs Harwood**  
**Mrs Stanley**

Governor Safeguarding Lead:  
**Rev Martin Keighley**

Christian Value for Autumn 2  
**Perseverance**

## ATTENDANCE

National Expectation for Attendance

**94%**

School Attendance Target

**96%**

Whole School Attendance is currently

**94.41%**

## CLASS ATTENDANCE CURRENTLY

EYFS	95.73%
Year 1	95.24%
Year 2	93.85%

Year 3	91.90%
Year 4	94.22%
Year 5	94.21%
Year 6	96.28%

# STARS AND LEARNERS OF THE WEEK

## WEEK ENDING 5<sup>TH</sup> DECEMBER

### STARS OF THE WEEK

EYFS  
YEAR 1  
CREATIVE CORNER  
YEAR 2  
YEAR 3  
YEAR 4  
YEAR 5  
YEAR 6

-  
Inaya  
Lizzie  
Emiliano  
Francesca  
Lily  
Amelia  
Leo

### LEARNERS OF THE WEEK

-  
Elsie  
Oscar  
Hugo  
George  
Hallie  
Jacob  
Ruby P

### TEACHER OF THE WEEK

Miss Dodd

### SUPPORT STAFF OF THE WEEK

Mrs Walker

### TIDY CLASSROOM

KS1  
Year 1

KS2  
Year 3

## HOUSE POINT WINNERS

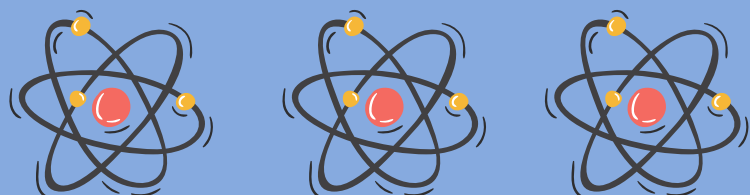
Green Snakes



## STARS OF THE WEEK



## LEARNERS OF THE WEEK



# STARS AND LEARNERS OF THE WEEK

## WEEK ENDING 12<sup>TH</sup> DECEMBER

### STARS OF THE WEEK

EYFS  
YEAR 1  
CREATIVE CORNER  
YEAR 2  
YEAR 3  
YEAR 4  
YEAR 5  
YEAR 6

-  
Teari  
Bear  
Milo  
Cleo  
Archie F  
Kaiden  
Reeva

### LEARNERS OF THE WEEK

-  
Joseph  
Ray  
Angelina  
Lily  
Violet  
Joe  
Finley D

### TEACHER OF THE WEEK

Miss Dodd

### SUPPORT STAFF OF THE WEEK

Mrs Duhig

### TIDY CLASSROOM

Creative  
Corner

KS2  
Year 6

## HOUSE POINT WINNERS

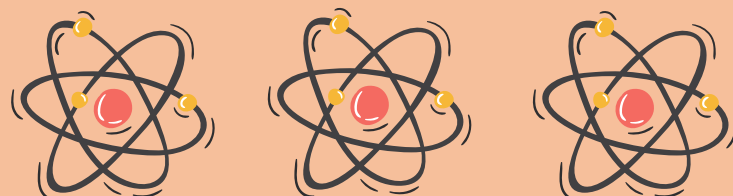
Yellow Lions



## STARS OF THE WEEK



## LEARNERS OF THE WEEK



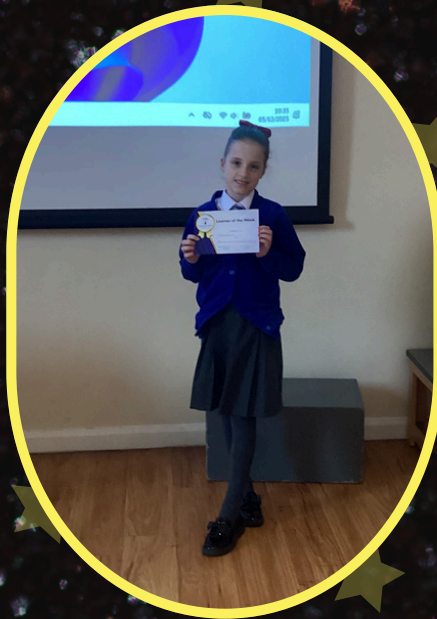


# Headteacher's Award w/e 5<sup>th</sup> December

## Floki Award



Martha  
Y6



Ruby W  
Y5



April  
Y2

# Headteacher's Award w/e 12<sup>th</sup> December

## Floki Award



School  
Choir

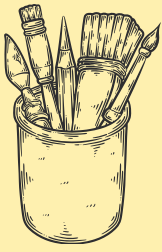


Sophia  
Y6



Jack R  
Y5





# LOOK AT OUR LEARNING

## KEY STAGE 1



### EYFS



The EYFS would like to wish everyone a very merry Christmas! They have enjoyed lots of activities such as Christmas jumper day and a Christmas party!

### YEAR 1



In DT, we designed and made our own pants/knickers for a special occasion.

### CREATIVE CORNER



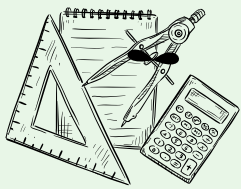
Creative are creating their own storyboard for Bright Stanley.

### YEAR 2



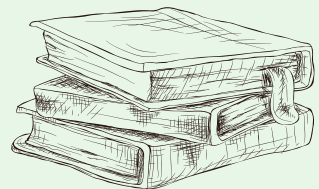
Year 2 went on an immersive Christmas Journey with BSYW.





# LOOK AT OUR LEARNING

## KEY STAGE 2



### YEAR 3



We've been learning all about Shape Poems in English! Here we are creating one-word calligrams!

### YEAR 4



We've had a great term in Y4 finishing off in English with a topic on News Reports. The kids have been enjoying reading our collection of medieval newspapers!

### YEAR 5



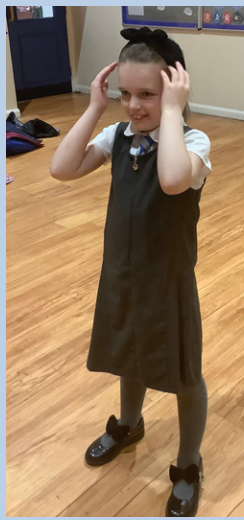
Year 5 enjoyed taking part in a Water Workshop with United Utilities. We learnt about how to save water and how we have to look after our water systems in the UK.

### YEAR 6



Year 6 have been busy finishing their Fairground models in DT this week.





# OOSC Activities







All inclusive payment  
has raised £910 for  
the school.  
Thank you to all the  
parents that  
contributed!







Thank you for becoming  
a Champion of Antarctica  
and helping to protect  
the last great wilderness  
on Earth.



# Congratulations on making a piece of Antarctic history!

This certificate is proudly presented to

**Poulton St Chad's C of E Primary School**

.....  
**Thank you for attending the first ever live assembly  
from Union Glacier, Antarctica on 5th December 2025.**

Hosted by **Picture News, 2041School**, and special guest **Robert Swan OBE**,  
this historic event brought together children from around the world to learn why  
Antarctica is special and why we all need to help protect it.

Joining the assembly was Teddy, the first teddy in history to visit both the North Pole  
and the South Pole in Rob's pocket, inspiring us all with his spirit of exploration.



*"Congratulations on joining the first ever  
live assembly from Union Glacier, Antarctica.  
By becoming Champions of Antarctica,  
you are helping to protect one of the most  
magical and fragile places on Earth.  
Your commitment truly matters."*

Dame Joanna Lumley DBE FRGS –  
The Voice of Antarctica

*"Thank you all for making a part of history and  
promising to protect Antarctica, a place very close  
to my heart. I am so proud of you all for becoming  
Champions of Antarctica."*

*Your enthusiasm, curiosity  
and commitment give me great  
hope for the future. Together,  
we can continue to protect this  
extraordinary continent for  
generations to come."*

*RCSwan*

Robert Swan OBE, FRGS



Hosted by:



To view our award-winning  
films on Antarctica, please visit:

[www.2041School.com](http://www.2041School.com)



# Who to Contact?

All calls are recorded for training and monitoring purposes

Website	Bursar 01253 883639	Attendance Champion	SENCO	Family Support Worker	Teachers	Senior Leadership Team
www.poultonstchadsce.lancs.sch.uk	bursar@poultonstchadsce.lancs.sch.uk	l.cameron@poultonstchadsce.lancs.sch.uk	senco@poultonstchadsce.lancs.sch.uk	fsw@poultonstchadsce.lancs.sch.uk	Name@poultonstchadsce.lancs.sch.uk	<b>SLT</b>
<ul style="list-style-type: none"> <li>*Staff emails</li> <li>*Term dates</li> <li>*School policies</li> <li>*Car parking permit</li> <li>*Christian Values</li> <li>*Class information</li> <li>*Extra-Curricular activities</li> <li>*Friends of St Chad's</li> <li>*Governing Board</li> <li>*School uniform</li> <li>*Lunch Menu</li> <li>*General information</li> </ul>	<ul style="list-style-type: none"> <li>*Urgent matters</li> <li>*General questions</li> <li>*Medication</li> <li>*Change of personal details/ circumstances</li> <li>*Scopay</li> <li>*Lateness</li> </ul>	<ul style="list-style-type: none"> <li>*Holiday Requests</li> <li>*Unauthorised absences</li> <li>*Medical appointments</li> <li>*Breakfast club</li> <li>*After school club</li> </ul> <p><i>**Sickness absence is to be reported on the Parent App**</i></p>	<ul style="list-style-type: none"> <li>*Concerns of additional needs</li> <li>*EHCP questions</li> <li>*Support with child's diagnosed condition</li> </ul> <p><i>**Tuesdays on site**</i></p>	<ul style="list-style-type: none"> <li>*Early Help</li> <li>*Safeguarding</li> <li>*Family support</li> <li>*Mental health concerns</li> <li>*Bereavement</li> <li>*Advice about other agencies</li> </ul>	<ul style="list-style-type: none"> <li>*Day to day school</li> <li>*Friendship issues</li> <li>*Low level well-being concerns</li> <li>*Progress &amp; development</li> <li>*Homework / reading</li> <li>*Clubs</li> </ul>	<ul style="list-style-type: none"> <li>*Any unresolved concerns following discussions with class teacher/staff.</li> </ul> <p><b>EYFS/ KS1:</b> Mrs Harwood N.Harwood@</p> <p><b>KS2:</b> Mr Blackburn MrBlackburn@</p> <p><b>Headteacher:</b> Mrs Bitsakaki head@</p>
<b>INSTANT ANSWER!</b>	Urgent- same day response. Everything else- within 48 hours.	Response within 48 hours	Will respond on Tuesdays. Meetings may take 2 weeks to arrange.	Response within 48 hours	Email response or meeting arranged within 48 hours	Response within 48 hours. Meetings may take 2 weeks to arrange.

**Safeguarding Team** - Mrs Bitsakaki, Mr Blackburn and Mrs Harwood

## Teacher Email Addresses

### Key Stage 1

#### EYFS

MrsArcher@poultonstchadsce.lancs.sch.uk

#### Year 1

n.harwood@poultonstchadsce.lancs.sch.uk

h.parry@poultonstchadsce.lancs.sch.uk

#### Creative Corner

c.siddall@poultonstchadsce.lancs.sch.uk

#### Year 2

gcrossley@poultonstchadsce.lancs.sch.uk

h.parry@poultonstchadsce.lancs.sch.uk

### Key Stage 2

#### Year 3

MrGraham@poultonstchadsce.lancs.sch.uk

#### Year 4

f.sorsbie@poultonstchadsce.lancs.sch.uk

#### Year 5

MrBlackburn@poultonstchadsce.lancs.sch.uk

#### Year 6

e.hopwood@poultonstchadsce.lancs.sch.uk



# SCHOOL ADMISSIONS PRIMARY

NORTH

Do you have a child starting  
primary school in September 2026  
and living in Lancashire?

**Closing date: 15 January 2026**

You **must** apply even if a brother or sister is already at the school,  
or the school is linked to your child's nursery.

Apply for a school place now by scanning  
the QR code or visit [lancashire.gov.uk/schools](https://www.lancashire.gov.uk/schools)



If travel cost is an important factor in your school preference,  
please check the guidance on our website, or call **01524 581148**.

**HAVE  
YOUR SAY**

*Between 1 October and 31 January schools are consulting with  
you to make sure admission arrangements meet future needs.  
To find out more please visit [www.lancashire.gov.uk/schoolplaces](https://www.lancashire.gov.uk/schoolplaces)  
and click 'school admission policies'.*

[lancashire.gov.uk](https://www.lancashire.gov.uk)

