



# SCHOOL MATTERS

Week Ending Friday 5th December 2025 Vol 7



**LOVE LEARNING. LOVE GOD. LOVE ONE ANOTHER.**

Fortnightly newsletter of Poulton-le-Fylde, St Chad's CE Primary School

Tel: 01253 883639

[www.poultonstchadsce.lancs.sch.uk](http://www.poultonstchadsce.lancs.sch.uk)



## Christian Value

Autumn 2

## Perseverance



**Galatians 6:9:** "And let us not grow weary of doing good, for in due season we will reap, if we do not give up."

## Computing Award



Well done to Mrs Parry for her excellent leadership in Computing and for putting us forward for a Computing award. We been awarded the NCCE Computing Quality Mark for excellence in computing curriculum delivery! Another success for St Chad's!

# Mrs Hopwood's Retirement

Sadly for us, after 28 years working at St Chad's, Mrs Hopwood is retiring at Xmas. Mrs Hopwood has been a committed Key Stage 2 Teaching Assistant and Higher Level Teaching Assistant, school governor and part of the Art team-leaving us with many beautiful Art pieces around school that she has worked on with children. We thank Mrs Hopwood for all her hard work, dedication and loyal service to St Chad's. We wish her well in her retirement and with the imminent arrival of her new grandchild!



## Christmas Showcase & Miss Whorlton-Jones

Parents are invited into school to showcase the children's Christmas activities on Thursday 18<sup>th</sup> December from 3:15-3:30pm. There will also be an opportunity to meet Miss Whorlton-Jones, our new Creative Corner teacher. Miss Whorlton-Jones joins us temporarily from Lytham Hall Park while Miss Siddall moves into Year 2. She has met the children already and is looking forward to meeting families- please call into Creative if you'd like to say hello!

Monday 8<sup>th</sup> December Y6

Tuesday 9<sup>th</sup> December Y5

Wednesday 10<sup>th</sup> December Y4

Monday 15<sup>th</sup> December Y3

Tuesday 16<sup>th</sup> December Y2

Wednesday 17<sup>th</sup> December Y1

Thursday 18<sup>th</sup> December EYFS



Please remember to make your all inclusive payment on SCOPAY before 1<sup>st</sup> December. We will not be accepting cash on the day.



From,  
Mrs Bitsakaki



# Termly Message from St Chad's Governors

Hello Parents & Carers,

We're really pleased to be introducing this new section of the school newsletter and to have the opportunity to reach out more closely with our families. This will be a termly feature where we'll share what the Governing Board has been up to and how we are supporting the school.

The Governing Board plays an important part in school life. We help guide the school's long-term direction, making sure that St Chad's values, ethos and caring culture shine through in everything the children experience. We also oversee finances and work alongside the Senior Leadership Team as friendly but honest partners, supporting and challenging plans where needed. While we focus on the big picture, we leave the day-to-day running of the school to Mrs Bitsakaki and her fantastic team.

The Autumn term is always full of energy as children settle happily into their new classes and staff build strong relationships. It's also a busy time for us as we come into school for our termly meetings. It's been a joy to see the exciting plans for the year ahead and to hear about the amazing work already being produced — a real credit to your children and our hardworking staff. Well done to all!

With Christmas just around the corner, you'll spot some of us as we proudly attend the church services and (even more excitingly!) escort the children to the pantomime — oh yes we are!

This is such a special time of year to reflect and give thanks to everyone who helps make St Chad's a safe, happy and supportive place to learn and grow. We are truly grateful to be part of such a caring community.

We wish all our St Chad's families a very Merry Christmas and a happy, healthy 2026.

From your Poulton St Chad's School Governing Board



## CALENDAR DATES

- Dec 8<sup>th</sup> Carol Service - 13:30 to 14:30
- Dec 11<sup>th</sup> Panto
- Dec 12<sup>th</sup> Elf Run  
Christmas Dinner &  
Christmas jumper Day
- Dec 16<sup>th</sup> EYFS & KS1 Nativity 13:30 to 14:30
- Dec 17<sup>th</sup> EYFS & KS1 Christmas Party
- Dec 18<sup>th</sup> KS2 Christmas Party  
Choir event for Grandparents - 2pm
- Dec 19<sup>th</sup> School closes for Christmas - 2pm
- Jan 5<sup>th</sup> Back to school

Designated Safeguarding Lead:  
**Mrs Bitsakaki**

Deputy Safeguarding Leads:  
**Mr Blackburn**  
**Mrs Hardy**  
**Mrs Harwood**

Governor Safeguarding Lead:  
**Rev Martin Keighley**

Christian Value for Autumn 2  
**Perseverance**

## ATTENDANCE

National Expectation for Attendance

**94%**

School Attendance Target

**96%**

Whole School Attendance is currently

**94.41%**

## CLASS ATTENDANCE CURRENTLY

EYFS	95.37%
Year 1	95.34%
Year 2	93.99%

Year 3	92.20%
Year 4	93.86%
Year 5	94.05%
Year 6	96.49%



# STARS AND LEARNERS OF THE WEEK

## WEEK ENDING 21<sup>ST</sup> NOVEMBER

### STARS OF THE WEEK

EYFS  
YEAR 1  
CREATIVE CORNER  
YEAR 2  
YEAR 3  
YEAR 4  
YEAR 5  
YEAR 6

-  
Max  
Maddox  
Amelia  
Mable  
Oliver  
Isla  
Jack H

### LEARNERS OF THE WEEK

-  
Connie  
Bonita  
Rory  
Esme  
Reeva  
Jacob  
Harry

### TEACHER OF THE WEEK

Mr Graham

### SUPPORT STAFF OF THE WEEK

Mr Harrod

### TIDY CLASSROOM

Creative  
Corner

KS2  
Year 3

## HOUSE POINT WINNERS

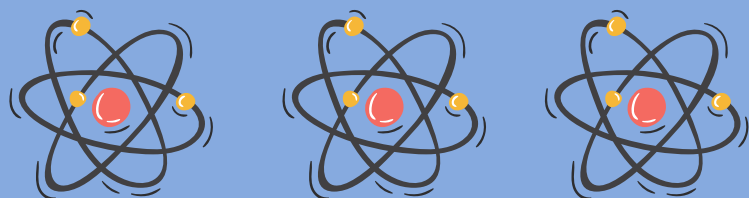
Red pandas



## STARS OF THE WEEK



## LEARNERS OF THE WEEK



# STARS AND LEARNERS OF THE WEEK

## WEEK ENDING 28<sup>TH</sup> NOVEMBER

### STARS OF THE WEEK

EYFS  
YEAR 1  
CREATIVE CORNER  
YEAR 2  
YEAR 3  
YEAR 4  
YEAR 5  
YEAR 6

-  
Oscar  
Hogan  
Albie  
Poppy  
Scarlett  
Lily H  
Aurora

### LEARNERS OF THE WEEK

-  
Reuben  
Nancie  
Skyla-Ann  
Rowan  
Sienna  
Harrison  
Erynn

### TEACHER OF THE WEEK

Mrs Parry

### SUPPORT STAFF OF THE WEEK

Mrs Downe

### TIDY CLASSROOM

KS1  
Year 2

KS2  
Year 6

## HOUSE POINT WINNERS

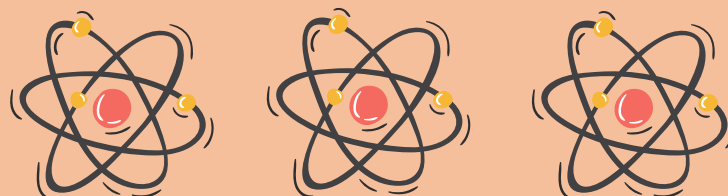
Blue Elephants



## STARS OF THE WEEK



## LEARNERS OF THE WEEK





# Headteacher's Award w/e 21st November

## Floki Award



Ada  
Y2



Thomas  
Y2



Luka  
Y6

# Headteacher's Award w/e 28th November

## Floki Award



Flynn  
Y4

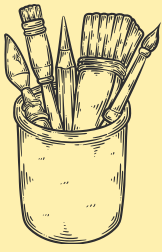


Matilda  
Y3



Lily  
Y4





# LOOK AT OUR LEARNING

## KEY STAGE 1



### EYFS



**This week we have been getting very festive in the EYFS classroom! The children have been decorating the classroom and having lots of fun doing Christmas crafts!**

### YEAR 1



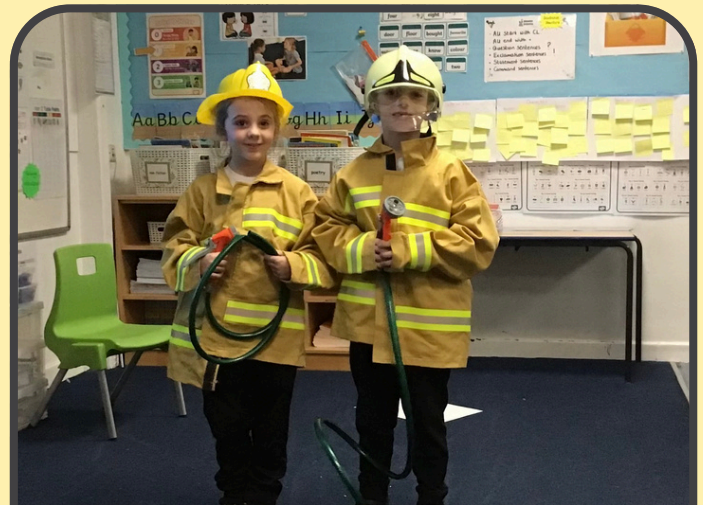
**This week in Science, we have been grouping materials according to their properties. The children explored a range of everyday objects & sorted them by properties such as hardness, flexibility, shininess & texture.**

### CREATIVE CORNER



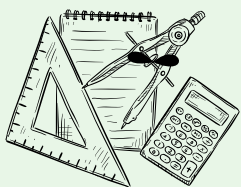
**In music, we listened to two contrasting pieces of music related to the seaside and explored how they made us feel.**

### YEAR 2



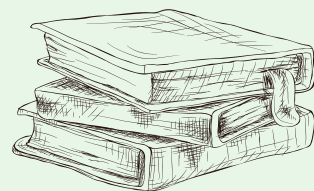
**The fire service visited Year 2 to teach us how to stay safe and what we should do in an emergency.**



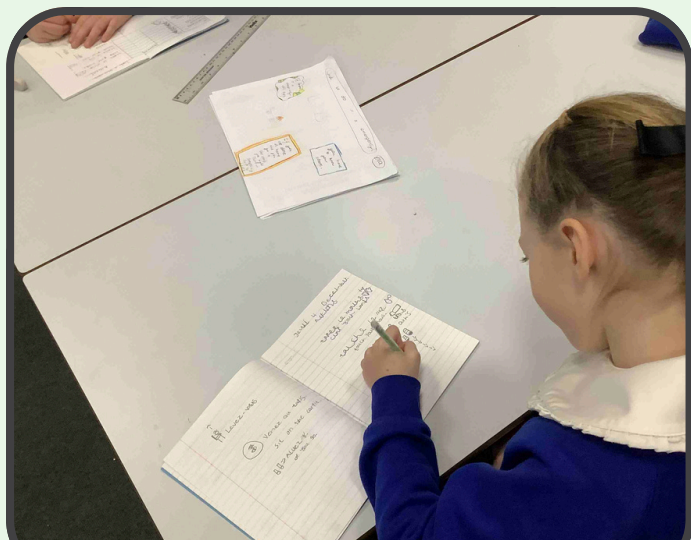


# LOOK AT OUR LEARNING

## KEY STAGE 2



### YEAR 3



Year 3 have been learning all about Actions in our French lessons. We wrote down a sequence of instructions to plan a dance!

### YEAR 4



This week, after lots of drafts & dummy books, Y4 finished their final poetry comics. Lots of fantastic examples of visual storytelling and some excellent draftsmanship skills!

### YEAR 5



This week in Year 5, we have been working collaboratively in groups to study evidence of a Flat Earth and evidence of a Spherical Earth.

### YEAR 6



This week Year 6 made Christingles with their buddies from EYFS and shared a special act of worship together.





# OOSC Activities





# Who to Contact?

All calls are recorded for training and monitoring purposes

Website	Bursar 01253 883639	Attendance Champion	SENCO	Family Support Worker	Teachers	Senior Leadership Team
www.poultonstchadsce.lancs.sch.uk	bursar@poultonstchadsce.lancs.sch.uk	l.cameron@poultonstchadsce.lancs.sch.uk	senco@poultonstchadsce.lancs.sch.uk	fsw@poultonstchadsce.lancs.sch.uk	Name@poultonstchadsce.lancs.sch.uk	SLT
<ul style="list-style-type: none"> <li>*Staff emails</li> <li>*Term dates</li> <li>*School policies</li> <li>*Car parking permit</li> <li>*Christian Values</li> <li>*Class information</li> <li>*Extra-Curricular activities</li> <li>*Friends of St Chad's</li> <li>*Governing Board</li> <li>*School uniform</li> <li>*Lunch Menu</li> <li>*General information</li> </ul>	<ul style="list-style-type: none"> <li>*Urgent matters</li> <li>*General questions</li> <li>*Medication</li> <li>*Change of personal details/ circumstances</li> <li>*Scopay</li> <li>*Lateness</li> </ul>	<ul style="list-style-type: none"> <li>*Holiday Requests</li> <li>*Unauthorised absences</li> <li>*Medical appointments</li> <li>*Breakfast club</li> <li>*After school club</li> </ul> <p><i>**Sickness absence is to be reported on the Parent App**</i></p>	<ul style="list-style-type: none"> <li>*Concerns of additional needs</li> <li>*EHCP questions</li> <li>*Support with child's diagnosed condition</li> </ul> <p><i>**Tuesdays on site**</i></p>	<ul style="list-style-type: none"> <li>*Early Help</li> <li>*Safeguarding</li> <li>*Family support</li> <li>*Mental health concerns</li> <li>*Bereavement</li> <li>*Advice about other agencies</li> </ul>	<ul style="list-style-type: none"> <li>*Day to day school</li> <li>*Friendship issues</li> <li>*Low level well-being concerns</li> <li>*Progress &amp; development</li> <li>*Homework / reading</li> <li>*Clubs</li> </ul>	<ul style="list-style-type: none"> <li>*Any unresolved concerns following discussions with class teacher/staff.</li> </ul> <p><b>EYFS/ KS1:</b> Mrs Harwood N.Harwood@</p> <p><b>KS2:</b> Mr Blackburn MrBlackburn@</p> <p><b>Headteacher:</b> Mrs Bitsakaki head@</p>
INSTANT ANSWER!	Urgent- same day response. Everything else- within 48 hours.	Response within 48 hours	Will respond on Tuesdays. Meetings may take 2 weeks to arrange.	Response within 48 hours	Email response or meeting arranged within 48 hours	Response within 48 hours. Meetings may take 2 weeks to arrange.

**Safeguarding Team** - Mrs Bitsakaki, Mr Blackburn and Mrs Harwood

## Teacher Email Addresses

### Key Stage 1

#### EYFS

MrsArcher@poultonstchadsce.lancs.sch.uk

#### Year 1

n.harwood@poultonstchadsce.lancs.sch.uk

h.parry@poultonstchadsce.lancs.sch.uk

#### Creative Corner

c.siddall@poultonstchadsce.lancs.sch.uk

#### Year 2

gcrossley@poultonstchadsce.lancs.sch.uk

h.parry@poultonstchadsce.lancs.sch.uk

### Key Stage 2

#### Year 3

MrGraham@poultonstchadsce.lancs.sch.uk

#### Year 4

f.sorsbie@poultonstchadsce.lancs.sch.uk

#### Year 5

MrBlackburn@poultonstchadsce.lancs.sch.uk

#### Year 6

e.hopwood@poultonstchadsce.lancs.sch.uk



# CHRISTMAS DINNER 12TH DECEMBER

Please book and pay through SCOPAY  
£2.90 for KS2 pupils who pay for school meals

Turkey

Vegetarian option -  
Quorn Fillet

Mash Potato & Roast Potato

Seasonal Vegetables

Pigs in Blankets

Festive Dessert





## Key Stage 2

# *Break Time Snack Bar*

### EVERY DAY

Fruit Pots - 30p

Raisins - 20p

Drinks - 40p

### FRIDAY

Crumpets - 40p

Toasted Teacakes - 40p

Toast - 20p

Please bring correct change



## Free Webinar

### Autism & ADHD: Strategies To Improve Sleep



17.12.2025



10am

Register your place at [witherslackgroup.co.uk/autism-adhd-sleep](https://witherslackgroup.co.uk/autism-adhd-sleep)



# We Are **HIRING!**

Join Our Team Now!



## Catering Assistant

- One position
- 10 hours a week - 11.30 am to 1.30pm
- Term time only
- Closing date Friday 12<sup>th</sup> December, 12pm

**APPLY NOW**

**For more information:**

 **01253 883639**

## Teaching Assistant - Level 3

- One position
- 30 hours a week
- Term time only
- Closing date Thursday 8th January 2026, 12pm

**APPLY NOW**

**For more information:**

 **01253 883639**

**LOVE LEARNING. LOVE GOD. LOVE ONE ANOTHER.**





# SCHOOL ADMISSIONS PRIMARY

NORTH

Do you have a child starting  
primary school in September 2026  
and living in Lancashire?

**Closing date: 15 January 2026**

You **must** apply even if a brother or sister is already at the school,  
or the school is linked to your child's nursery.

Apply for a school place now by scanning  
the QR code or visit [lancashire.gov.uk/schools](https://www.lancashire.gov.uk/schools)



If travel cost is an important factor in your school preference,  
please check the guidance on our website, or call **01524 581148**.

**HAVE  
YOUR SAY**

*Between 1 October and 31 January schools are consulting with  
you to make sure admission arrangements meet future needs.  
To find out more please visit [www.lancashire.gov.uk/schoolplaces](https://www.lancashire.gov.uk/schoolplaces)  
and click 'school admission policies'.*

[lancashire.gov.uk](https://www.lancashire.gov.uk)

