



# SCHOOL MATTERS

Week Ending Friday 5th June 2026

Vol 16



**LOVE LEARNING. LOVE GOD. LOVE ONE ANOTHER.**

Fortnightly newsletter of Poulton-le-Fylde, St Chad's CE Primary School

Tel: 01253 883639

[www.poultonstchadsce.lancs.sch.uk](http://www.poultonstchadsce.lancs.sch.uk)

## Christian Value

Summer 2

## Generosity



“A generous person will prosper; whoever refreshes others will be refreshed” (Proverbs 11:25)



# Sports Days

Thank you to all the parents and carers who came to support the children at Sport's Day. I'm sure you will agree that the children showed fantastic sportsmanship and enthusiasm; the staff and governors were a brilliantly organised team; and our parents and carers were encouraging and a wonderful audience. Even the weather was kind to us! It's so lovely to see us all coming together like this for the children- it makes the event extra special. Thankyou again!

## KS2 Junior Snack Bar

We would like to start a term's trial of including a hot option at the Junior Snack Bar. Each Wednesday we will be offering a bacon or sausage barm for £2 which can be paid by cash on the day.

## Water Safety

We will be teaching the children about water safety in all classes over the next couple of weeks as part of our PSHE lessons. This is in response to what has sadly occurred recently in Lancashire and the UK.



*From,  
Mrs Bitsakaki*

# NEW OOSC



The children and staff are really enjoying our new OOSC space. Thank you parents for the surveys you have completed. Here is some feedback from our families:

My child enjoys attending strongly agree/agree 100% strongly

Do you find drop off and/or collection easy? Yes 100%

“Brilliant to have the OOSC in a separate setting and more like a mini youth club to give the children a break from the traditional school setting.”

“Lovely to see the children having fun, lots of space and bright.”

“It’s lovely for them to have their own space that doesn’t need to get packed away all the time. My daughter loves breakfast club and wishes she could go every day.”

If you are considering sending your child to OOSC and would like to see our wonderful new space, please contact Ms Cameron who will be happy to show you around!

# Safeguarding Team

Designated Safeguarding Lead:



**Mrs Bitsakaki**  
Headteacher

Governor Safeguarding Lead:

**Rev Martin Keighley**

Deputy Safeguarding Lead:



**Mr Blackburn**  
Deputy Headteacher



**Mrs Harwood**  
Associate Assistant  
Headteacher



**Mrs Stanley**  
Family Support Worker

Christian Value  
Summer 2

**Generosity**

## ATTENDANCE

School Attendance Target

**96%**

Whole School Attendance is currently

**95.84%**

Miss Cameron would like to remind you that our school attendance target is 96%.

Well done Year 1 and Year 6

## CLASS ATTENDANCE CURRENTLY

EYFS	95.48%	Year 3	93.70%
Year 1	96.02%	Year 4	95.80%
Year 2	94.59%	Year 5	95.56%
		Year 6	96.21%

# CALENDAR DATES

## JUNE

- 5<sup>th</sup> Business Enterprise Afternoon
- 9<sup>th</sup> Welcome meeting - EYFS September 2026
- 10<sup>th</sup> - 12<sup>th</sup> Year 6 - Winmarleigh
- 12<sup>th</sup> Year 1 Trip to Fleetwood Museum
- 18<sup>th</sup> Public Speaking Final - 2pm
- 22<sup>nd</sup> Year 1 Worship

### ST CHAD'S CHURCH SERVICES



10am - All Age Worship on the first Sunday of the month. (Informal family worship. Duration 45 mins)

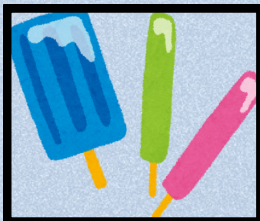
4.00 pm 'St Chad's @ 4' held on the 3rd Sunday of the month. (Drinks and cake served at 4.00 pm, followed at 4.30 pm by an informal family friendly service finishing c 5.15 pm.)

## JULY

- 2<sup>nd</sup> Whole school Transition Day
- 6<sup>th</sup> EYFS Worship
- 9<sup>th</sup> Year 4 Trip to Brockholes
- 15<sup>th</sup> Year 2 Trip to Brockholes
- 15<sup>th</sup> Reports coming home
- 16<sup>th</sup> Year 6 Performance for parents 1:30pm
- 20<sup>th</sup> Year 6 Leaver's Service 9:30am
- 21<sup>st</sup> School closes for summer - 2pm close

## Ice Pops Dates

Monday 22<sup>nd</sup> June Y6  
Tuesday 23<sup>rd</sup> June Y5  
Wednesday 24<sup>th</sup> June Y4  
Thursday 25<sup>th</sup> June Y3



Monday 29<sup>th</sup> June Y2  
Tuesday 30<sup>th</sup> June Y1  
Wednesday 1<sup>st</sup> July EYFS

# STARS AND LEARNERS OF THE WEEK

## WEEK ENDING 15TH MAY

### STARS OF THE WEEK

EYFS  
YEAR 1  
CREATIVE CORNER  
YEAR 2  
YEAR 3  
YEAR 4  
YEAR 5  
YEAR 6

Archie  
Connie  
Ellie  
Skyla P  
Archer  
Oliver  
Alexander  
Harry

### LEARNERS OF THE WEEK

Arthur  
Rory  
Hugo  
Fleur  
Bella  
Scarlett  
Lilly M  
Evie-Grace

### TEACHER OF THE WEEK

Mrs Harwood

### SUPPORT STAFF OF THE WEEK

Mrs Cassidy

### TIDY CLASSROOM

KS1  
Year 2

KS2  
Year 4

### HOUSE POINT WINNERS

Green Snakes

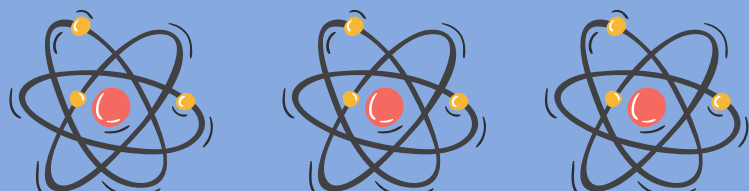


FANTASTIC WALKING  
YEAR 6

## STARS OF THE WEEK



## LEARNERS OF THE WEEK



# Headteacher's Award w/e 15<sup>th</sup> May

# Floki Award



Evie  
Y1



Dana  
EYFS

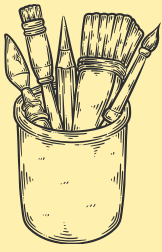


Millie  
Y1



## OOSC Activities





# LOOK AT OUR LEARNING

## KEY STAGE 1



### EYFS



This week we have been learning about transport in the past. The children have been looking at how we used to get around and roleplayed horses and carriages.

### YEAR 1



Reverend Martin visited Year 1 to re-enact a baptism and talk to the children about what happens during the ceremony.

### CREATIVE CORNER

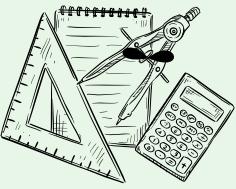


We've been learning all about holidays in the past and identifying features which are different from today. We have enjoyed learning about the bathing machines and donkey rides on the beach!

### YEAR 2

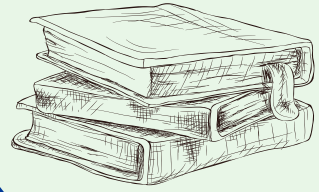


Year 2 have been learning what animals need to survive.



# LOOK AT OUR LEARNING

## KEY STAGE 2



### YEAR 3



Year 3 are learning about the Neolithic period. Here we are reenacting the discovery of Skara Brae!

### YEAR 4



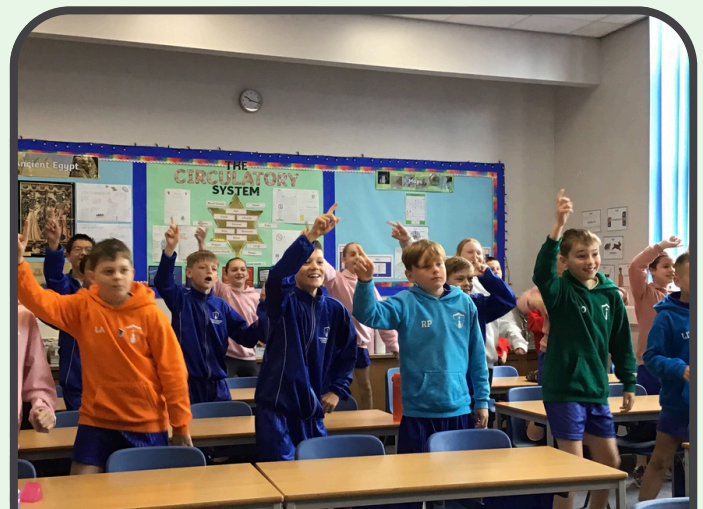
We've had a blast this week finishing off our samba unit in music! Lots of great skills being shown with timing, teamwork and syncopated rhythms!

### YEAR 5



Year 5 have been exploring volume in Maths this week, creating 3D shapes that have different volumes with cubes.

### YEAR 6



Year 6 have been focusing on wellbeing through dance to help manage worries and create a positive mindset!



# SPORTS DAY 2026



# Who to Contact?

All calls are recorded for training and monitoring purposes

Website  www.poultonstchadsce.lancs.sch.uk	Bursar 01253 883639  bursar@poultonstchadsce.lancs.sch.uk	Attendance Champion  l.cameron@poultonstchadsce.lancs.sch.uk	SENCO  senco@poultonstchadsce.lancs.sch.uk	Family Support Worker  fsw@poultonstchadsce.lancs.sch.uk	Teachers  Name@poultonstchadsce.lancs.sch.uk	Senior Leadership Team  <b>SLT</b>
<ul style="list-style-type: none"> <li>*Staff emails</li> <li>*Term dates</li> <li>*School policies</li> <li>*Car parking permit</li> <li>*Christian Values</li> <li>*Class information</li> <li>*Extra-Curricular activities</li> <li>*Friends of St Chad's</li> <li>*Governing Board</li> <li>*School uniform</li> <li>*Lunch Menu</li> <li>*General information</li> </ul>	<ul style="list-style-type: none"> <li>*Urgent matters</li> <li>*General questions</li> <li>*Medication</li> <li>*Change of personal details/ circumstances</li> <li>*Scopay</li> <li>*Lateness</li> </ul>	<ul style="list-style-type: none"> <li>*Holiday Requests</li> <li>*Unauthorised absences</li> <li>*Medical appointments</li> <li>*Breakfast club</li> <li>*After school club</li> <li>**Sickness absence is to be reported on the Parent App**</li> </ul>	<ul style="list-style-type: none"> <li>*Concerns of additional needs</li> <li>*EHCP questions</li> <li>*Support with child's diagnosed condition</li> <li>**Tuesdays on site**</li> </ul>	<ul style="list-style-type: none"> <li>*Early Help</li> <li>*Safeguarding</li> <li>*Family support</li> <li>*Mental health concerns</li> <li>*Bereavement</li> <li>*Advice about other agencies</li> </ul>	<ul style="list-style-type: none"> <li>*Day to day school</li> <li>*Friendship issues</li> <li>*Low level well-being concerns</li> <li>*Progress &amp; development</li> <li>*Homework / reading</li> <li>*Clubs</li> </ul>	<ul style="list-style-type: none"> <li>*Any unresolved concerns following discussions with class teacher/staff.</li> <li><b>EYFS/ KS1:</b> Mrs Harwood N.Harwood@</li> <li><b>KS2:</b> Mr Blackburn MrBlackburn@</li> <li><b>Headteacher:</b> Mrs Bitsakaki head@</li> </ul>
<b>INSTANT ANSWER!</b>	Urgent- same day response. Everything else- within 48 hours.	Response within 48 hours	Will respond on Tuesdays. Meetings may take 2 weeks to arrange.	Response within 48 hours	Email response or meeting arranged within 48 hours	Response within 48 hours. Meetings may take 2 weeks to arrange.

**Safeguarding Team** - Mrs Bitsakaki, Mr Blackburn , Mrs Harwood & Mrs Stanley

## Teacher Email Addresses

### Key Stage 1

#### EYFS

MrsArcher@poultonstchadsce.lancs.sch.uk

#### Year 1

n.harwood@poultonstchadsce.lancs.sch.uk

#### Creative Corner

m.whorlton-jones@poultonstchadsce.lancs.sch.uk

#### Year 2

c.siddall@poultonstchadsce.lancs.sch.uk

### Key Stage 2

#### Year 3

MrGraham@poultonstchadsce.lancs.sch.uk

#### Year 4

f.sorsbie@poultonstchadsce.lancs.sch.uk

#### Year 5

MrBlackburn@poultonstchadsce.lancs.sch.uk

#### Year 6

l.dodd@poultonstchadsce.lancs.sch.uk

Diocesan Offices  
Clayton House  
Walker Office Park  
Blackburn  
BB1 2QE



Tel (01254) 503400

The Headteacher  
St Chad's CE Primary School  
Hardhorn Road  
Poulton-le-Fylde  
Lancs  
FY6 7SR

27<sup>th</sup> April 2026

Dear Nicole, Staff, Governors and Children

Following your recent SIAMS inspection, on behalf of the Blackburn Diocesan Board of Education, we would like to offer massive congratulations. The report you have received wholeheartedly reflects that your Christian vision is at the centre of everything you do and is making a huge impact on the lives of everyone.

It is with immense pride that we acknowledge the strengths and achievements highlighted in the report, in particular:

- The school benefits from very strong and enduring partnerships in the community, particularly with the local Church and clergy. As a result, St Chad's itself is nurtured with mutual love, care and support.
- Leaders have developed and work hard to maintain a compelling and highly effective Christian vision. Built on the biblical understanding of universal, self-sacrificial love, the vision has the growth of each individual at its heart.
- Pupils enjoy school and talk enthusiastically about their learning.
- Daily worship is an important part of the life of the school community. Pupils and adults come with a sense of reverence and an expectation that there is something important to experience.



- There is a very strong culture in the school of deep respect and care which supports the wellbeing of pupils and adults. Love for God and others is a constant motivation to build positive relationships.
- The partnership with the local Church provides steadfast support and helps build a community of love and healing.

We are sincerely grateful to you all for your steadfast dedication to 'loving learning, loving God and one another.

Jesus calls us to be salt and light in our world and it is very clear St Chad's CE Primary School is dazzling. The report showcases your collective desire to live out the Gospel, serve God and love one another. You are an inspirational example of a place where the Christian vision truly comes to life.

Enjoy celebrating your success!

With warm regards and best wishes

**Iain Parks**  
Director of Education

**Lisa Fenton**  
SIAMS Lead



Diocesan Offices  
Clayton House  
Walker Office Park  
Blackburn  
BB1 2QE



Tel (01254) 503404

Nicole Bitsakaki – Headteacher  
Poulton St Chad's Church of England Primary School  
Hardhorn Road  
Poulton le Fylde  
Blackpool  
FY6 7SR

12 May 2026

Dear Nicole, Staff, Governors, Pupils and the Whole St Chad's School Community

## **OFSTED**

On behalf of the Blackburn Diocesan Board of Education, I am delighted to write following your recent Ofsted inspection to offer my warmest congratulations. The report reflects an excellent outcome and affirms clearly the strength, care and ambition that define St Chad's. It is evident that this is a school where pupils flourish—academically, socially and spiritually—and where the Christian vision is lived out faithfully in every aspect of school life.

At the heart of the report is a powerful sense of community and belonging. Inspectors recognise that pupils feel cared for and included from the moment they arrive, and that relationships between staff and pupils are warm, respectful and nurturing. This is more than a positive culture; it is a deeply Christian one, where each child is valued as a unique individual and where love, care and dignity shape the daily experience of school life.

Your Christian distinctiveness is especially evident in the way pupils treat one another. The report highlights the kindness, respect and responsibility pupils show—from older children supporting younger ones, to the way pupils model care in their relationships and interactions. This culture of service, compassion and mutual support is a powerful reflection of the Gospel values that underpin the life of your school.

The strength of personal development provision is another notable feature. Inspectors recognise that a thoughtful programme for personal development and wellbeing sits at the heart of school life. Pupils develop a deep understanding of relationships, safety and the wider world, including complex ideas such as bereavement, democracy and social change. They engage confidently with different faiths and cultures, and learn to appreciate diversity with maturity and respect. This formation of character—of reflective, compassionate and socially aware young people—is at the very core of Church of England education.

Pupils clearly benefit from the rich range of opportunities available to them. Whether through leadership roles such as worship leaders and sustainability champions, or through wider experiences including visits, clubs and community projects, pupils are encouraged to grow in confidence and to understand their role in making a difference in the world. These opportunities nurture resilience, independence and a sense of purpose, ensuring that pupils leave St Chad's well prepared for the next stage of their lives.

The report also rightly celebrates the strong inclusive ethos across the school. Leaders have created a culture in which there are high expectations for all pupils, and careful attention is given to ensuring that pupils with additional needs or barriers to learning are fully supported. Through thoughtful adaptation, targeted support and a strong understanding of pupils as individuals, all children are enabled to access the curriculum and wider opportunities. This reflects a clear commitment to equity, dignity and justice—values that sit at the heart of your Christian foundation.

Leadership shines through as a significant strength in the report. Despite a period of considerable change, leaders have established a stable, committed and reflective staff team with high morale and a shared sense of purpose. The culture of trust, teamwork and professional growth is clearly valued by staff, and governors play an active and supportive role in sustaining the school's strong direction.

Above all, this report tells the story of a school where pupils are proud to belong, where they are encouraged to be the best they can be, and where they are inspired to live out values of kindness, service and respect in all that they do. The Christian ethos of St Chad's is not simply stated—it is evident, tangible and transformative.

Please share my sincere congratulations and thanks with your entire school community. We are immensely proud of all that has been achieved at St Chad's and confident in the continued impact of your work.

With every blessing

Iain Parks  
**Director of Education**  
**Blackburn Diocesan Board of Education**



### **Water safety – Important message for parents and schools**

Following recent tragic incidents involving water, this is an important reminder of how quickly situations can change. As the weather gets warmer, more children and young people are spending time around rivers, lakes and the coast, increasing the risk of harm.

Even on hot days, open water can be dangerously cold, and conditions are often unpredictable.

Children and young people may not always recognise these risks, so it's vital that key safety messages are shared.

### **Key water safety messages**

Please help reinforce the following advice with children and young people:

- **Stop and Think:** Check for hidden hazards such as deep water, currents and cold temperatures
- **Stay Together:** Never go into or near water alone; choose areas with lifeguards where possible
- **Call 999 in an emergency:** Ask for the Coastguard at the coast, or Fire & Rescue if you are inland
- **Float** – If you fall in, stay calm, float on your back and control your breathing



### Cold water shock

Many recent incidents have involved cold water. Even strong swimmers can be affected. Sudden immersion can cause panic, loss of breathing control and reduced ability to swim.

#### If you fall into water:

- Try to stay calm: The effects of cold water shock usually pass within the first minute
- Float on your back to regain control of your breathing
- Once calm, call for help or swim to safety if possible

### A Life-saving skill: Float to Live

Teaching children how to float could save a life:

- Tilt your head back with ears in the water
- Relax and breathe slowly
- Move hands and feet gently to stay afloat

#### In an emergency:

