



# SCHOOL MATTERS

Week Ending Friday 3<sup>rd</sup> July 2026

Vol 17



**LOVE LEARNING. LOVE GOD. LOVE ONE ANOTHER.**

Fortnightly newsletter of Poulton-le-Fylde, St Chad's CE Primary School

Tel: 01253 883639

[www.poultonstchadsce.lancs.sch.uk](http://www.poultonstchadsce.lancs.sch.uk)

## Christian Value

Summer 2

## Generosity



**“A generous person will prosper; whoever refreshes others will be refreshed” (Proverbs 11:25)**

## Worship

We have had two lovely, impactful worships this week- one led by Ethos Group and Mr Sorsbie, who taught us about generosity. The children were very confident, well prepared and did an amazing job! Our other worship was led by Rev Sarah and Eli from Poulton Methodist Church. They delivered the message of having Jesus as a foundation for our lives- reminding us that if we build our foundations with Jesus we can remain unshaken by changes and can better weather life's storms.

## **PARKING**

Please can we remind parents to be considerate when parking. We have had a complaint from a resident on Elm Court area about our parents parking in permit-only parking areas and we would like to maintain positive relations with our neighbours. Thank you for your cooperation.

## **TRANSITION**

The children have all had a lovely time in their new classrooms with their new teachers on Moving Up Day! Our 'Meet the Teacher' dates for September are available now. We would also like to invite our families in for a 'Discover with me' session in September- more details will follow.

**To our new EYFS and Families**

**WELCOME  
TO  
SCHOOL**



*From,  
Mrs Bitsakaki*

# Safeguarding Team

Designated Safeguarding Lead:



**Mrs Bitsakaki**  
Headteacher

Governor Safeguarding Lead:

**Rev Martin Keighley**

Deputy Safeguarding Lead:



**Mr Blackburn**  
Deputy Headteacher



**Mrs Harwood**  
Associate Assistant  
Headteacher



**Mrs Stanley**  
Family Support Worker

Christian Value  
Summer 2

**Generosity**

## ATTENDANCE

School Attendance Target

**96%**

Whole School Attendance is currently

**95.36%**

Miss Cameron would like to remind you that our school attendance target is 96%.

Well done EYFS and Year 1

## CLASS ATTENDANCE CURRENTLY

EYFS	95.65%	Year 3	94.39%
Year 1	96.54%	Year 4	94.99%
Year 2	94.49%	Year 5	95.51%
		Year 6	96.11%

# CALENDAR DATES

## JULY

- 6<sup>th</sup>** EYFS Worship
- 9<sup>th</sup>** Year 4 Trip to Brockholes
- 10<sup>th</sup>** Diversity Day
- 15<sup>th</sup>** Year 2 Trip to Brockholes
- 15<sup>th</sup>** Reports coming home
- 16<sup>th</sup>** Year 6 Performance for parents 1:30pm
- 20<sup>th</sup>** Year 6 Leaver's Service 9:30am
- 21<sup>st</sup>** School closes for summer - 2pm close

### ST CHAD'S CHURCH SERVICES



10am - All Age Worship on the first Sunday of the month. (Informal family worship. Duration 45 mins)

4.00 pm 'St Chad's @ 4' held on the 3rd Sunday of the month. (Drinks and cake served at 4.00 pm, followed at 4.30 pm by an informal family friendly service finishing c 5.15 pm.)

## SEPTEMBER

- 1<sup>st</sup>** School reopens

# MEET THE TEACHER DATES

<b>Year 2</b>	<b>10<sup>th</sup> September</b>	<b>2:45pm</b>
<b>Year 3</b>	<b>11<sup>th</sup> September</b>	<b>2:45pm</b>
<b>Year 4</b>	<b>14<sup>th</sup> September</b>	<b>2:45pm</b>
<b>Year 1</b>	<b>15<sup>th</sup> September</b>	<b>2:45pm</b>
<b>Year 6</b>	<b>17<sup>th</sup> September</b>	<b>2:45pm</b>
<b>Year 5</b>	<b>18<sup>th</sup> September</b>	<b>2:45pm</b>

# STARS AND LEARNERS OF THE WEEK

## WEEK ENDING 19<sup>TH</sup> JUNE

### STARS OF THE WEEK

EYFS  
YEAR 1  
CREATIVE CORNER  
YEAR 2  
YEAR 3  
YEAR 4  
YEAR 5  
YEAR 6

Levison  
Sonny  
AJ  
Arlo  
Ronnie  
Scarlett  
Eleanor  
Finn

### LEARNERS OF THE WEEK

Abdiel  
Elsie  
Inaya  
Jack  
Fergus  
Hallie  
Harrison  
Jack H

### TEACHER OF THE WEEK

Mr Graham

### SUPPORT STAFF OF THE WEEK

Mr Harrod

### TIDY CLASSROOM

KS1  
EYFS

KS2  
Year 3

### HOUSE POINT WINNERS

Green Snakes

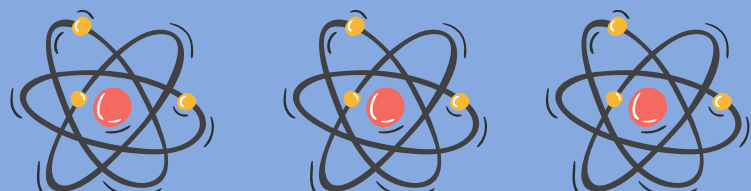


CLASS OF THE WEEK  
EYFS

## STARS OF THE WEEK



## LEARNERS OF THE WEEK



# STARS AND LEARNERS OF THE WEEK

## WEEK ENDING 26<sup>TH</sup> JUNE

### STARS OF THE WEEK

EYFS  
YEAR 1  
CREATIVE CORNER  
YEAR 2  
YEAR 3  
YEAR 4  
YEAR 5  
YEAR 6

Dana  
Max  
Georgia  
Blake & Dexter  
Florence  
Harlowe  
Elsie  
Ruby

### LEARNERS OF THE WEEK

Hogan  
Lucie  
Louie  
Ellee  
Perla  
Harvey  
Samuel  
Ellie

### TEACHER OF THE WEEK

Miss Dodd

### SUPPORT STAFF OF THE WEEK

Mr McKay

### TIDY CLASSROOM

KS1  
EYFS

KS2  
Year 5

FANTASTIC CLASS  
YEAR 3

HOUSE POINT WINNERS

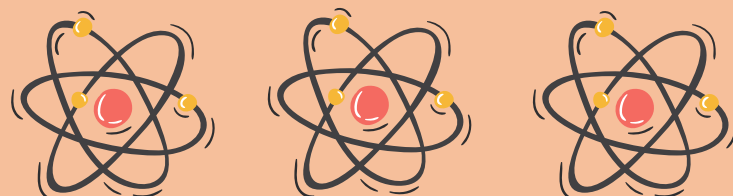
Yellow Lions



## STARS OF THE WEEK



## LEARNERS OF THE WEEK



# Headteacher's Award w/e 19<sup>th</sup> June



India-Rose  
Y6



Evelyn  
Y6



Noah  
Y2



Harry  
Y6



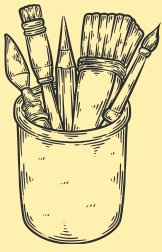
Florence  
Y3



Lola  
Y4



Oscar  
Y1



# LOOK AT OUR LEARNING

## KEY STAGE 1



### EYFS



This week the children have been discussing what they have been doing at home and decided to make a cinema in our outdoor area.

### YEAR 1



In music, we played high and low sounds on a glockenspiel while reading high and low symbols.

### CREATIVE CORNER



In creative this week we have been learning about Blackpool as a famous seaside town. We have been learning about the illuminations and have used chalk to draw our own lights.

### YEAR 2



Y2 have been challenging each other on Sumdog.

# LOOK AT OUR LEARNING

## KEY STAGE 2

### YEAR 3



In Art we have been inspired by Quentin Blake's exaggerated illustrations of Ronald Dahl's 'Dirty Beasts'. Here we are making some of our own 3D versions!

### YEAR 4



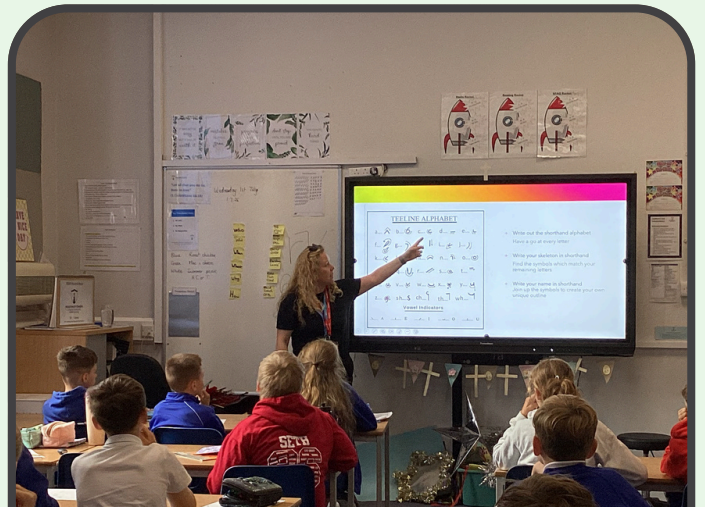
Over the past couple of weeks, we have been building and evaluating our bird's nest sculptures in Year 4. There's been lots of creative construction work and some great team work from all of the groups to create their works of art!

### YEAR 5



Year 5 have been developing their athletics ability in the warm weather, improving their technique when taking part in relay races on school field.

### YEAR 6



We had a fantastic lesson with Mrs Bancroft about being news reporters and writing in short hand!



# OOSC Activities



# SCHOOL LIBRARY



## MRS THUSHANTHAN'S STAR READERS



## Free School Meals – Who is Entitled?

### Important Information for Families.

Firstly, if your child is already receiving Free School Meals and is in Years 3–11, there is nothing you need to do. The Local Authority already holds your information and will automatically check your child's eligibility ahead of their return to school in September 2026.

If your child is in Key Stage 1 (Reception to Year 2), they will already have been receiving a free school meal through the universal infant scheme. If you have previously completed a Free School Meal application, so that your child's school can access additional funding, your eligibility will also be automatically checked—so again, you do not need to take any action.

If your child has not been receiving a free school meal and you believe your they may be eligible please read the information below.

From September 2026, the Government is extending eligibility for Free School Meals. This means that more families may now qualify for support, even if they have not previously been eligible.

### What this means for you

- If your household income is lower, your child may now be entitled to free school meals at school
- Schools receive additional funding (known as Pupil Premium) for every eligible child, which is used to support learning, resources and enrichment opportunities
- Even if your child prefers a packed lunch, applying can still bring valuable benefits to both your child and the school

### What you need to do

- If you think you may now be eligible, we strongly encourage you to submit an application before the start of the academic year.
- Applications are quick, confidential and securely processed
- If your child is already receiving Free School Meals, you do not need to reapply

### Why it's important to apply

- Ensures your child receives all the support they are entitled to
- Helps the school access additional funding to support pupils
- May provide access to further support, such as help with trips or activities

If you would like further information or support with your application, please contact the school office.

**We encourage all families to take a few minutes to check their eligibility — this support can make a real difference.**

**APPLY NOW**



# Pre-loved Uniform Sale



We have lots of items available all priced at £1 each.



**Taking place at 3:15p.m. on  
Friday 3<sup>rd</sup> July and Friday 10<sup>th</sup> July in  
the school playground/hall.**

# Who to Contact?

All calls are recorded for training and monitoring purposes

Website  www.poultonstchadsce.lancs.sch.uk	Bursar 01253 883639  bursar@poultonstchadsce.lancs.sch.uk	Attendance Champion  l.cameron@poultonstchadsce.lancs.sch.uk	SENCO  senco@poultonstchadsce.lancs.sch.uk	Family Support Worker  fsw@poultonstchadsce.lancs.sch.uk	Teachers  Name@poultonstchadsce.lancs.sch.uk	Senior Leadership Team  <b>SLT</b>
<ul style="list-style-type: none"> <li>*Staff emails</li> <li>*Term dates</li> <li>*School policies</li> <li>*Car parking permit</li> <li>*Christian Values</li> <li>*Class information</li> <li>*Extra-Curricular activities</li> <li>*Friends of St Chad's</li> <li>*Governing Board</li> <li>*School uniform</li> <li>*Lunch Menu</li> <li>*General information</li> </ul>	<ul style="list-style-type: none"> <li>*Urgent matters</li> <li>*General questions</li> <li>*Medication</li> <li>*Change of personal details/ circumstances</li> <li>*Scopay</li> <li>*Lateness</li> </ul>	<ul style="list-style-type: none"> <li>*Holiday Requests</li> <li>*Unauthorised absences</li> <li>*Medical appointments</li> <li>*Breakfast club</li> <li>*After school club</li> <li><i>**Sickness absence is to be reported on the Parent App**</i></li> </ul>	<ul style="list-style-type: none"> <li>*Concerns of additional needs</li> <li>*EHCP questions</li> <li>*Support with child's diagnosed condition</li> <li><i>**Tuesdays on site**</i></li> </ul>	<ul style="list-style-type: none"> <li>*Early Help</li> <li>*Safeguarding</li> <li>*Family support</li> <li>*Mental health concerns</li> <li>*Bereavement</li> <li>*Advice about other agencies</li> </ul>	<ul style="list-style-type: none"> <li>*Day to day school</li> <li>*Friendship issues</li> <li>*Low level well-being concerns</li> <li>*Progress &amp; development</li> <li>*Homework / reading</li> <li>*Clubs</li> </ul>	<ul style="list-style-type: none"> <li>*Any unresolved concerns following discussions with class teacher/staff.</li> <li><b>EYFS/ KS1:</b> Mrs Harwood N.Harwood@</li> <li><b>KS2:</b> Mr Blackburn MrBlackburn@</li> <li><b>Headteacher:</b> Mrs Bitsakaki head@</li> </ul>
<b>INSTANT ANSWER!</b>	Urgent- same day response. Everything else- within 48 hours.	Response within 48 hours	Will respond on Tuesdays. Meetings may take 2 weeks to arrange.	Response within 48 hours	Email response or meeting arranged within 48 hours	Response within 48 hours. Meetings may take 2 weeks to arrange.

**Safeguarding Team** - Mrs Bitsakaki, Mr Blackburn , Mrs Harwood & Mrs Stanley

## Teacher Email Addresses

### Key Stage 1

#### EYFS

MrsArcher@poultonstchadsce.lancs.sch.uk

#### Year 1

n.harwood@poultonstchadsce.lancs.sch.uk

#### Creative Corner

m.whorlton-jones@poultonstchadsce.lancs.sch.uk

#### Year 2

c.siddall@poultonstchadsce.lancs.sch.uk

### Key Stage 2

#### Year 3

MrGraham@poultonstchadsce.lancs.sch.uk

#### Year 4

f.sorsbie@poultonstchadsce.lancs.sch.uk

#### Year 5

MrBlackburn@poultonstchadsce.lancs.sch.uk

#### Year 6

l.dodd@poultonstchadsce.lancs.sch.uk



Imperial Society of Teachers of Dancing  
Modern Theatre

# We've made it to the Janet Cram Finals 2026



Our very own Ruby is competing in a dancing National Final this weekend after qualifying- we wish her the best of luck! Go Ruby!

# Slip, Slop, Slap, Seek, Slide



**Slip** on clothes that cover your skin. A light weight, long sleeved, collared t-shirt is ideal



**Slop** sunscreen\* on exposed skin, using factor 50+ for children



**Slap** wide brimmed hat to protect your face and neck



**Seek** shade - especially if outdoors between 11 and 3 pm



**Slide** on sunglasses\* to protect your eyes

\*Sunglasses with wraparound lenses or wide arms with the CE Mark or UV400 mark.

\*Suncream should have a sun protection factor (SPF) of at least 30 to protect against UVB and at least 4-star UVA protection. Adults should aim to apply around 30ml, or 6 to 8 teaspoons of sunscreen if you're covering your entire body, 30 mins before you go outside.



# Bowland Champion Species Party!



Forest of  
Bowland  
National  
Landscape



Friday 7<sup>th</sup> August

1 - 2.30pm or 2.30 - 4pm

Gisburn Forest Hub, nr Slaidburn

Join us for wild moves, mystical music and magical masks at Bowland's family-friendly Champion Species party!

Did you know? The Forest of Bowland National Landscape is celebrating 14 very special birds, plants, insects, fish, mammals and fungi with this fab summer event.

**FREE**, but **booking is essential** and under 18s need to be accompanied by an adult.

**To book**, please see the listings at:

[www.forestofbowland.com/festival-bowland](http://www.forestofbowland.com/festival-bowland) or scan the QR code below.



For more details, please email [hetty.byrne@lancashire.gov.uk](mailto:hetty.byrne@lancashire.gov.uk)